



TLL622021
Bluetooth FM Transmitter B3
User manual

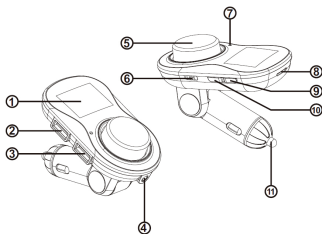


INTO YOUR FUTURE

I. Product Introduction

Thank you for choosing a Tellur product! B3 Bluetooth FM Transmitter helps you enjoy your favorite music by streaming it, wirelessly or through AUX, from your smartphone, Micro SD card or memory stick to the car's audio system. The transmitter supports smartphone recharging and hands-free call function.

II. Product Appearance



III. Diagram explanation:

1. 1.4" LCD screen;
2. USB1, U disk interface, supports 5V/1A mobile phone charging;
3. USB2, mobile phone charging, 5V/2.1A+ charging recognition;
4. AUX interface (input/output) (Note: AUX is output when music is playing through U disk, TF card or Bluetooth; when music is not playing through U

disk, TF card or Bluetooth, AUX is input).

5. Multi-function knob: short press to pause/play; long press to switch mode; turn to adjust volume; after connected to Bluetooth, short press to answer/hang up call; double click to redial; long press on incoming call to reject; long press during calls to switch to private conversation.

6. Power switch button;

7. Microphone;

8. Micro SD card slot;

9. Short press to play previous song; long press to adjust FM up;

10. Short press to play next song; long press to adjust FM down;

11. Power input interface.

IV. Features:

1. FM full frequency transmission, 87.5-108.0MHZ;

2. Screen display 1.4";

3. U disk functions;

4. TF card functions;

5. Bluetooth answering, hanging up, rejecting, redialing and other calling functions;

6. Bluetooth stereo music playing;

7. Echo cancellation and noise control (CVC) technologies during calling;

8. Dual-USB output voltage, total maximum power output 5V/3.1A;

9. Automatic power-off memory function;

10. Charging recognition;

11. Private answering function;

12. Hard power switch;
13. Big multifunctional knob;
14. Supports MP3/WAV files;
15. Supports battery voltage detection.

V. Operation Instructions

4.1 Bluetooth Mode

4.1.1. Insert the transmitter into the lighter socket and turn on hard power switch. The LCD screen will display the frequency and battery voltage of the transmitter. Set the car's radio and the transmitter to the same frequency.

4.1.2. Turn on your device's Bluetooth, search for "Tellur FMT-B3" and click to establish connection. Once successfully connected, the LCD display will show the message "Bluetooth is connected".

4.1.3. Play music through Bluetooth from your device (smartphone/tablet). Use the multifunctional knob to control music (pause/play) and adjust the volume.

4.1.4. Short press knob to answer/hang up coming call; long press to reject; double click to redial; long press during talking to switch to private conversation.

Note: You can only redial the last number you dialed.

4.2 U Disk Mode

4.2.1 Insert the U disk into USB1 interface and the transmitter will automatically play music from the U

disk. Single click the knob to pause/play music; press frequency button to switch songs.

4.3 TF Card Playing

4.3.1 Insert the TF card into TF card slot and the transmitter will automatically switch to TF card mode and play the music from the TF card. Single click the knob to pause/play music, press frequency button to switch songs.

4.4 Adjust Frequency

4.4.1 After turning on the transmitter, long press <</>> to adjust frequency up and down.

Note: Long press <</>> to adjust frequency fast and short press to adjust slowly.

4.5 Switch Mode

4.5.1 When Bluetooth is connected and TF card/USB/AUX is inserted at the same time, long press the knob to switch modes.

Note: There will be corresponding voice prompts about the current status of the transmitter while switching modes or inserting external devices.

4.6 Charging Recognition

4.6.1 Connect the mobile device through the USB2 port. The transmitter will automatically recognize device type and will provide the maximum charging current to reduce charging time while protecting the device's battery.

VI. Power-off Memory

The System will automatically memorize the song, the transmission frequency and other information before power-off. On the next use, the transmitter will automatically play the last played song. If you remove or change memory device or the system detects a fault, the transmitter will begin the play from the first song.

VII. Technical specifications

Rated working voltage: 12V~24V

Limit working voltage: 8-27V

USB output Dual USB output Max: 5V/3.1A

Working temperature: 0-60°C

Charging identification USB2 support: 5V/2.1A

Battery voltage display accuracy: Error±1V

SNR: >60dB

Degree of distortion: <0.1%

Frequency response: 20Hz-15Khz

Left and Right Channel: >60dB

Bluetooth version: Version 4.2+EDR

Bluetooth sound processing: A2DP (Advance Audio Distribution Profile) function

Bluetooth range: Barrier-free within 10m

Microphone range: 0.5-2m

FM frequency: 87.5-108.0Mhz

FM Mode: Stereo digital PLL frequency locking

VIII. Additional information

1.This device has dual charging ports and a maximum output power of 5V/3.1A.

2. When setting the frequency, avoid frequencies with strong signal in order to get a better sound quality.
3. Bluetooth connection fidelity varies from one smartphone to another.
4. If your smartphone doesn't reconnect automatically to Bluetooth after powering the transmitter off, Bluetooth has to be reconnected manually.
7. Do not use this product in a dusty and humid environment, with extremely high and low temperatures.
8. Do not drop the product to avoid surface damage or breakdown.
9. In case of an incoming call, the transmitter will switch automatically to Bluetooth mode. When call is finished, the transmitter returns automatically to the last used mode.

IX. Package includes

1. Bluetooth FM Transmitter B3
2. User Manual
3. Warranty card
4. Jack 3.5mm AUX cable



X. Disposal and recycling information

The crossed-out wheeled-bin symbol on your product, battery, literature or packaging reminds you that all electronic products and batteries must be taken to separate waste collection points at the end of their working lives; they must not be

disposed of in the normal waste stream with household garbage. It is the responsibility of the user to dispose of the equipment using a designated collection point or service for separate recycling of waste electrical and electronic equipment (WEEE) and batteries according to local laws. Proper collection and recycling of your equipment helps ensure EEE waste is recycled in a manner that conserves valuable materials and protects human health and the environment, improper handling, accidental breakage, damage, and/or improper recycling at the end of its life may be harmful for health and environment.



ABN Systems International

 Str. Marinariilor, nr.29
Sector 1, Bucuresti, Romania

 004.021.233.09.95

 office@tellur.com
office@abnsystems.ro

 www.tellur.com

Declaration of conformity

We, ABN SYSTEMS INTERNATIONAL S.R.L., Bucharest, Sector 1, Marinariilor street, nr. 31, we declare on own responsibility that the products below:

Product description	Brand	Product code
FM Transmitter Bluetooth FMT-B3, black	Tellur	TLL622021

Do not endanger life, health or work safety, do not have a negative impact on the environment and correspond to the standards stated in the manufacturer's declaration of conformity.

The products are in compliance with the following standards and / or other normative documents:

RED – 2014/53/EU

Applied standards:

EN 60950-1:2006 +A11:2009+A1:2010+A12:2011+A2:2013

EN 62479:2010

EN 301 489-1 V2.2.0

EN 301 489-17 V3.2.0

EN 55032:2015

EN 55020:2007/A12:2016

EN 300 328 V2.1.1

ETSI EN 301 357 V2.1.1

RoHS – 2011/65/EU

The product bears CE mark, applied in 2018

Name: George Barbu
Function: General manager

Place and date: Bucharest, 05.11.2018
Signed:

